

T60RT/T66JRT

TELESCOPIC BOOM LIFT



- Rugged all-terrain telescopic boom lifts
- Powerful 4 wheel drive and oscillating axle
- Ultra-tight turning radius
- Excellent working range and 1.8m jib for maximum versatility
- Simple to operate and easy to maintain

 **snorkel**
www.snorkellifts.com

TELESCOPIC BOOM LIFT

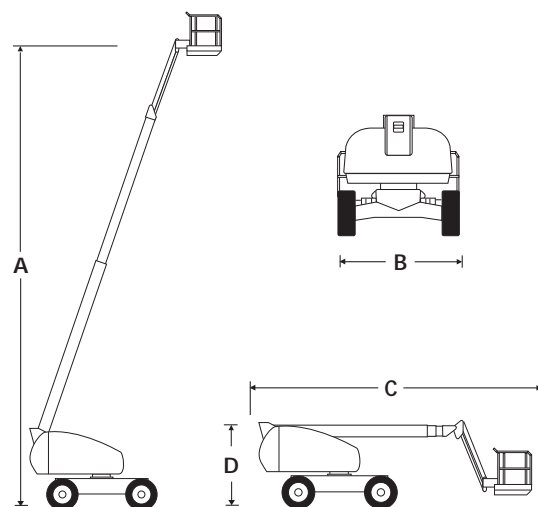
T60RT/T66JRT

DIMENSIONS	T60RT	T66JRT
Max. working height	20.3m	22.2m
Max. platform height (A)	18.3m	20.2m
Max. horizontal reach	15.9m	17.8m
Platform size	2.4m x 1.0m	2.4m x 1.0m
Overall width (B)	2.4m	2.4m
Transport width	2.2m	2.2m
Overall length (C)	9.2m	10.3m
Stowed height (D)	2.5m	2.5m
Ground clearance	350mm	350mm

PERFORMANCE		
Platform capacity (SWL)	227kg	227kg
Max. drive height	18.3m	20.1m
Max. drive speed (stowed)	6.1km/h	6.1km/h
Max. drive speed (elevated)	1.2km/h	1.2km/h
Jib length	n/a	1.8m
Jib working arc	n/a	136°
Gradeability	45%	45%
Inside turning radius	1.4m	1.4m
Tyres	355/55 D625 foam filled lug	
Controls	multi-function, proportional drive, raise and slew	
Drive system	4WD hydrostatic with oscillating axle	

POWER		
Power source	Kubota V2403M-T 44kW/59Hp	

WEIGHT		
Weight	9,857kg	11,500kg



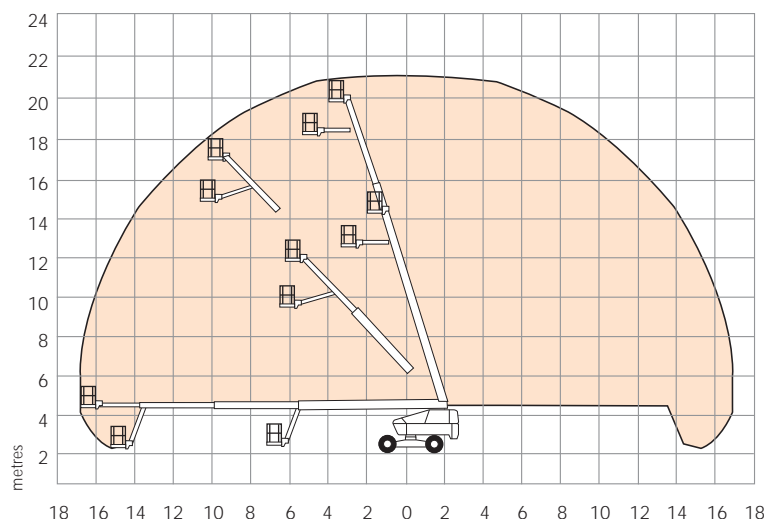
STANDARD FEATURES

- Powerful hydrostatic 4 wheel drive
- Oscillating axle
- Ultra-tight turning radius
- Swing-out engine tray
- Hour meter
- Horn
- Flashing amber light
- Power line to platform (no sockets)
- Three entry platform
- DC emergency operation
- CE approved

OPTIONS

- Special paint colours
- Dual fuel power source
- Motion alarm
- Poly-filled tyres
- 1.8m x 1.0m platform
- 2kW generator
- Glazier package
- On-board welder
- Extreme environment package
- Lights package
- Cold weather start kit
- Aircraft package

WORKING ENVELOPE



snorkel

2/26 Redfern Street,
Wetherill Park,
NSW 2164, Australia
t: +61 1300 900 700
e: sales.au@snorkellifts.com

www.snorkellifts.com