

EPV9.5T

TRUCK MOUNTED BOOM LIFT



- Working height of 9.5m
- Designed to fit most 2.5 tonne capacity vehicles
- Hydraulic outriggers for simple set-up
- Simple and easy to use and maintain
- Versatile, all-steel boom construction

 **snorkel**
www.snorkellifts.com

TRUCK MOUNTED BOOM LIFT

EPV9.5T

DIMENSIONS EPV9.5T

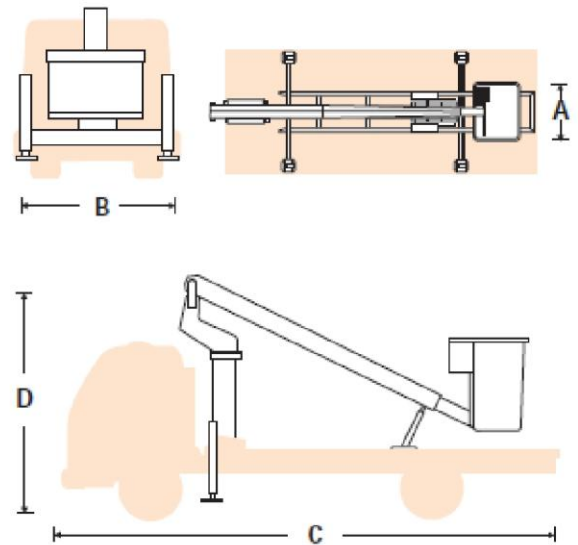
Max. working height	9.5m
Max. platform height	7.8m
Horizontal outreach	6.5m
Platform length (one man platform)	0.61m
Platform width (A) (one man platform)	0.76m
Overall width (B)	2.4m
Overall length (C)	5.0m
Stowed height (D) (subject to vehicle type)	max. 3.1m

PERFORMANCE

Platform capacity (SWL) (one man platform)	165kg
Platform levelling	Hydraulic
Turntable rotation	360° continuous

POWER

Hydraulic system	Electric proportional
Power source	Petrol or truck mounted PTO



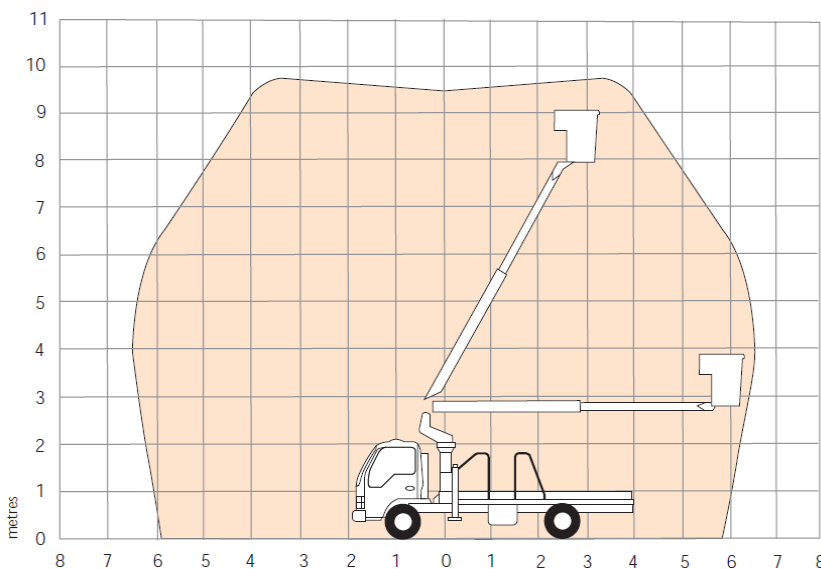
STANDARD FEATURES

- All steel boom & base construction
- Outrigger/boom safety interlock switches
- Emergency manual bleed down
- 540° non-continuous rotation
- Number coded wiring
- Hour meter
- Fail safe hydraulics with check valves
- 5 year warranty

OPTIONS

- LV insulation
- Flashing light
- Full decking
- Hydraulic outlet in platform

WORKING ENVELOPE



Examples of suitable trucks:

Isuzu NPR250M Wheel base 3.365m (sub 4.5T units)
 Isuzu NPR300M Wheel base 3.365m (standard units)
 Hino 300 series 616 Wheel base 3.4m (standard units)

snorkel www.snorkellifts.com

2/26 Redfern Street,
 Wetherill Park,
 NSW 2164, Australia
 t: +61 1300 900 700
 e: sales.au@snorkellifts.com

Specifications subject to change without notice. Photos and diagrams in this brochure are for promotional purposes only. Refer to appropriate Snorkel operators manual for detailed instructions on the proper use and maintenance.

